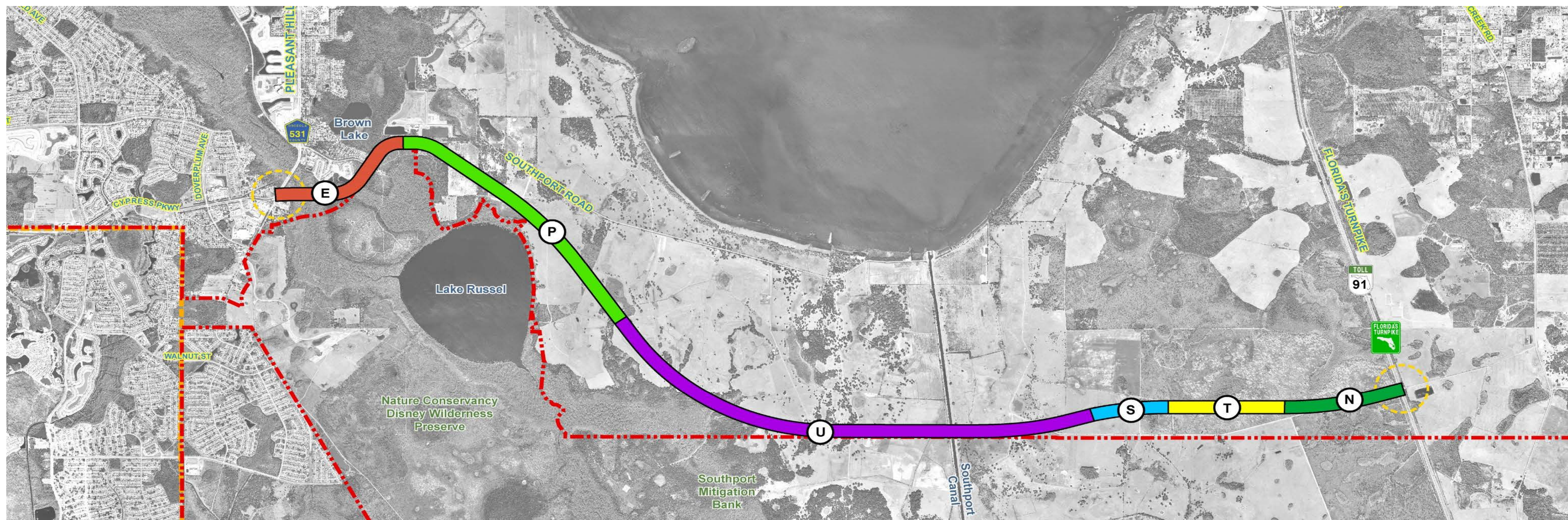


CORRIDOR 10



Advantages

- Low degree of impact to snail kite foraging and nesting habitat
- Lower degree of impact to bald eagle nests
- Low number of residential relocations
- Relatively low number of wetland impacts (69 ac.)
- Lower project costs (\$455,000,000)
- Minimal smokedshed impacts to SFWMD northern fire managed lands
- No impacts to Southport Park and boat ramp
- Consistent with OCX Master Plan
- Consistent with South Lake Toho Master Plan
- Lower aesthetic impact to recreational use of Lake Tohopekaliga

Disadvantages

- Moderate degree of impact to caracara foraging and nesting habitat
- Moderate degree of impact to potential grasshopper sparrow habitat
- Potential impacts to Southport Canal and SFWMD/TNC Lake Russell property
- Impacts to commercial businesses on Cypress Parkway
- Potential smokedshed impacts to SFWMD/TNC southern fire managed lands
- Corridor is very similar to Corridor 8 but has higher wetland impacts

Not recommended for further evaluation