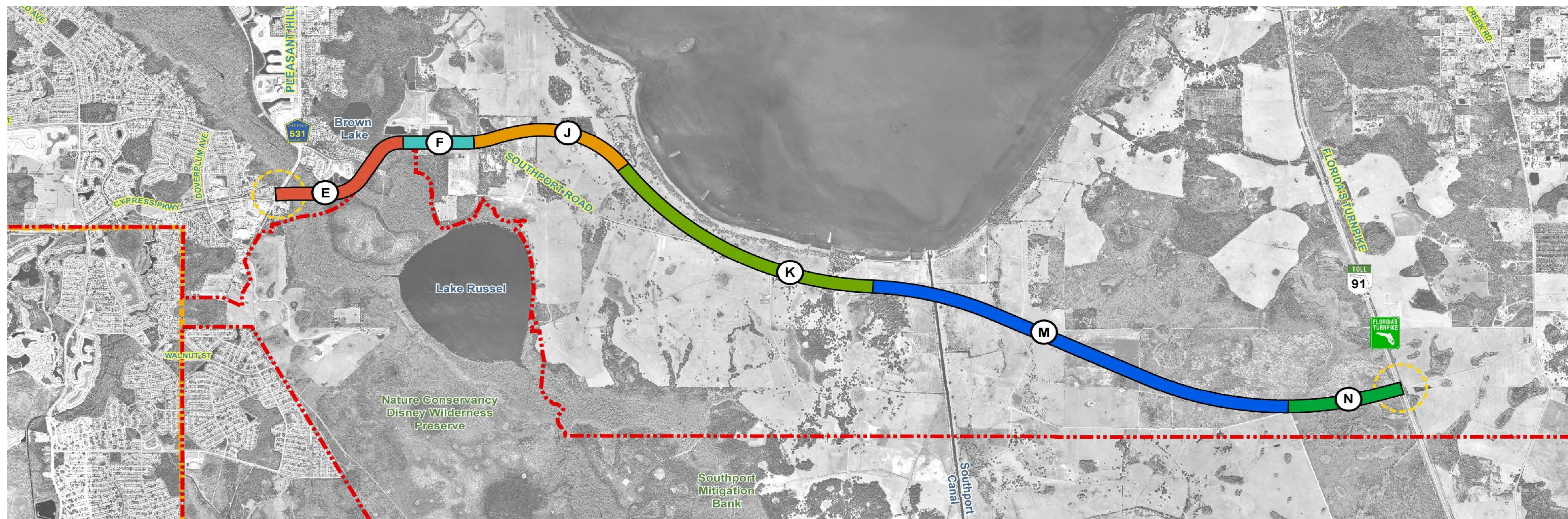


CORRIDOR 5



Advantages

- Low degree of impact to snail kite foraging and nesting habitat
- Low number of residential relocations
- Relatively low number of wetland impacts (55 ac.)
- Lower project costs (\$446,000,000)
- Minimal smokeshed impacts to SFWMD northern fire managed lands
- Consistent with OCX Master Plan

Disadvantages

- Direct impact to caracara nest
- Moderate degree of impact to caracara foraging and nesting habitat
- Higher degree of impact to bald eagle nests
- Moderate degree of impact to potential grasshopper sparrow habitat
- Anticipated aesthetic impact to recreational use of Lake Tohopekaliga
- Potential impacts to Southport Canal, Southport Park and boat ramp, and SFWMD/TNC Lake Russell property
- Impacts to commercial businesses on Cypress Parkway
- Potential smokeshed impacts to SFWMD/TNC southern fire managed lands
- Inconsistent with South Lake Toho Master Plan

Not recommended for further evaluation